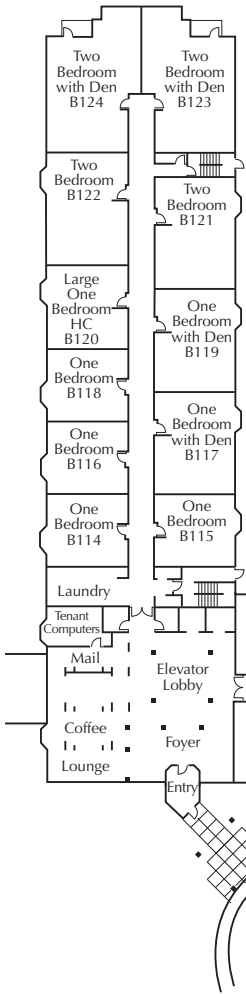




## The Ponds

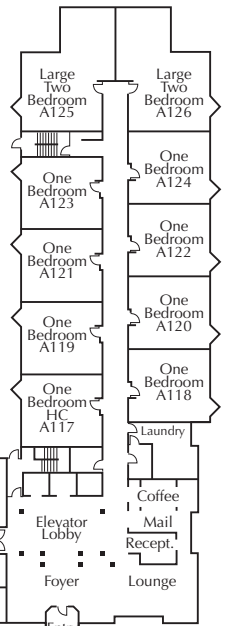
(Independent)



# First Floor Plan

## The Pines

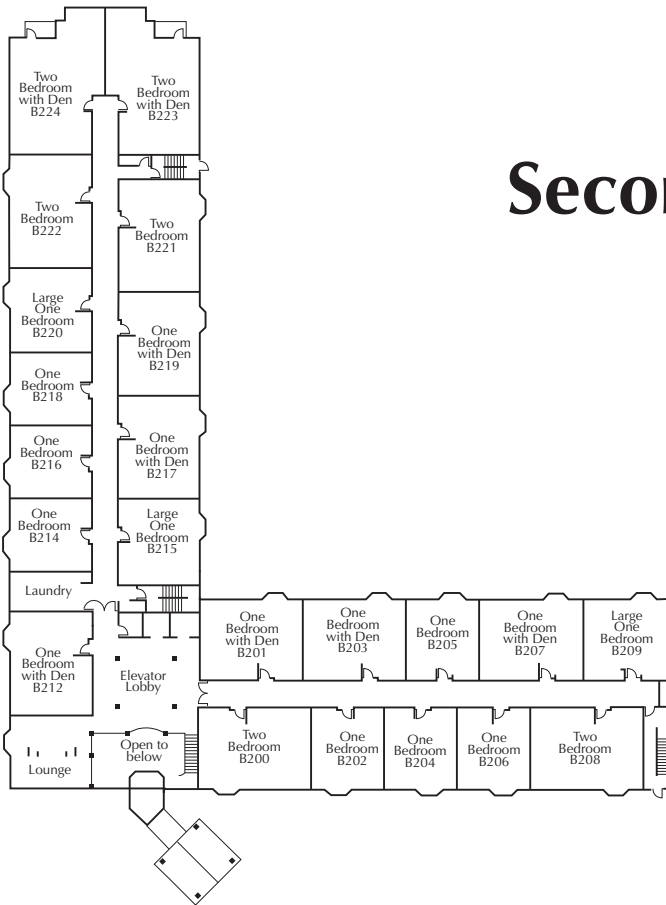
(Assisted)





## The Ponds

(Independent)



# Second Floor Plan

## The Pines

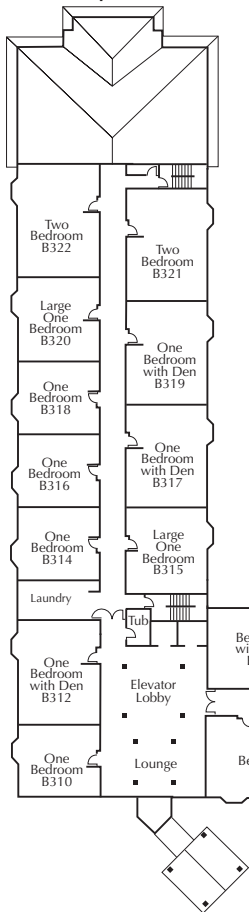
(Assisted)





## The Ponds

(Independent)

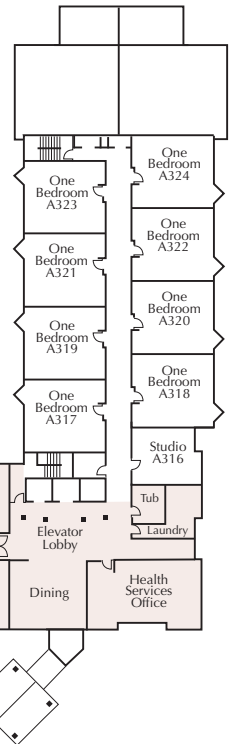


# Third Floor Plan



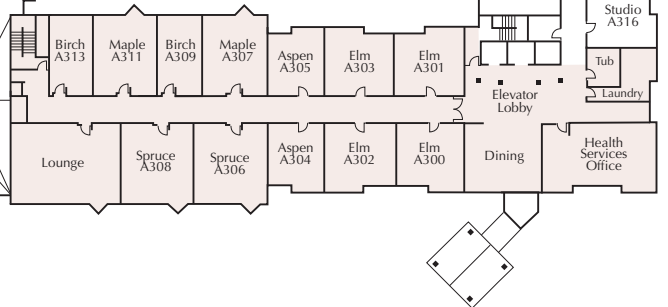
## The Pines

(Assisted)



## The Woods

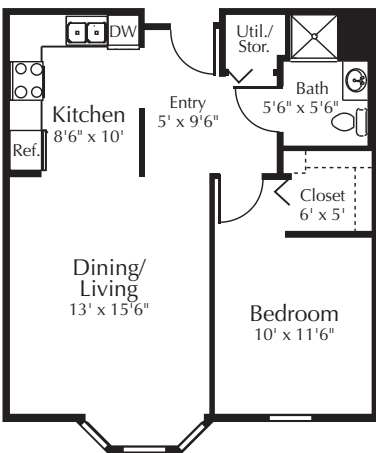
(Memory Care)



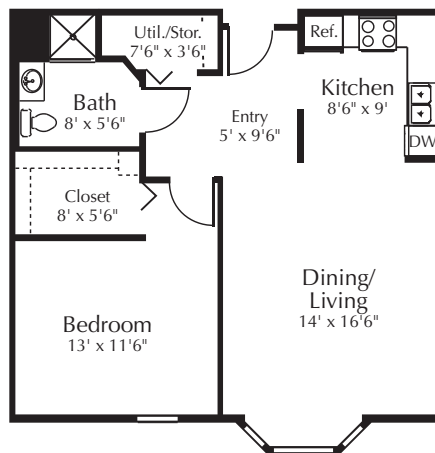
# The Ponds

## Floor Plans

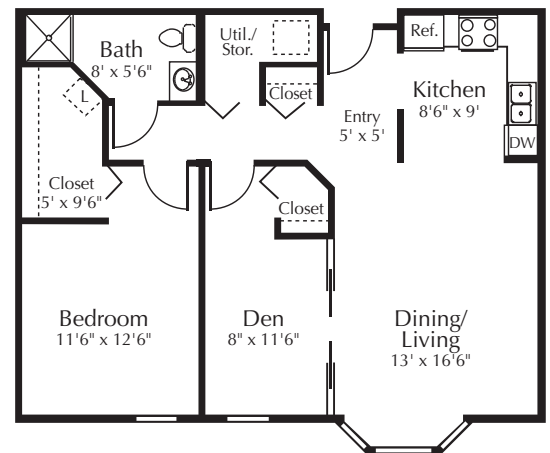
### Independent Living



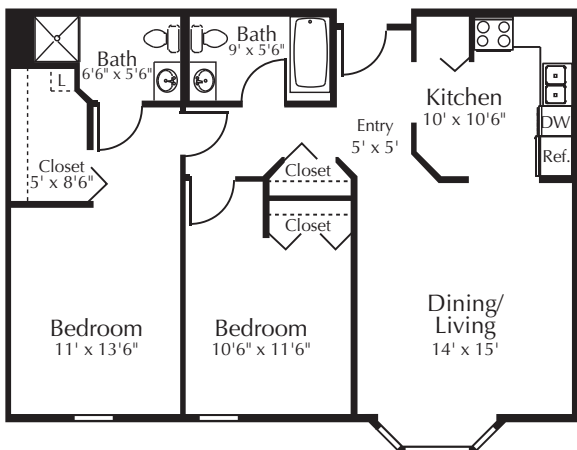
One-Bedroom  
617 sq. ft.



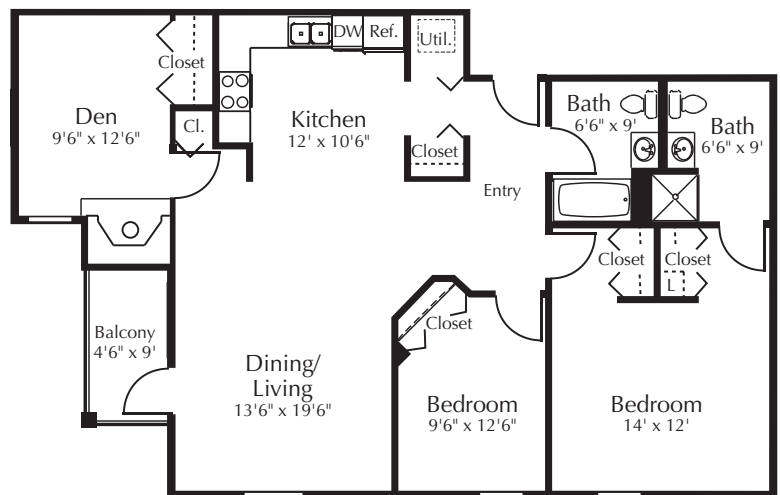
Large One-Bedroom  
721 sq. ft.



One-Bedroom w/Den  
884 sq. ft.



Two-Bedroom / Two-Bath  
957 sq. ft.

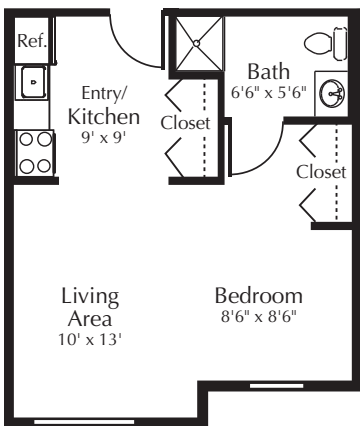


Two-Bedroom / Two-Bath  
with Den and Fireplace  
1189 sq. ft.

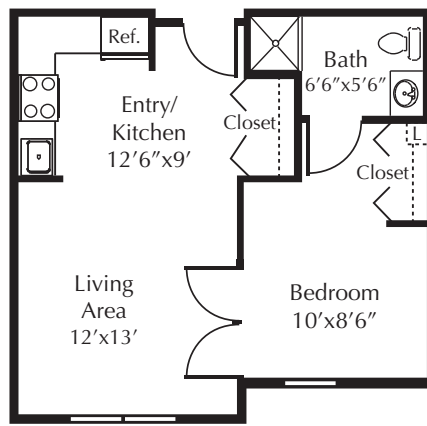
# The Pines

## Floor Plans

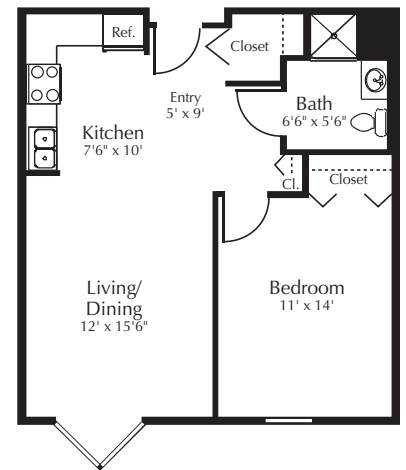
Assisted Living



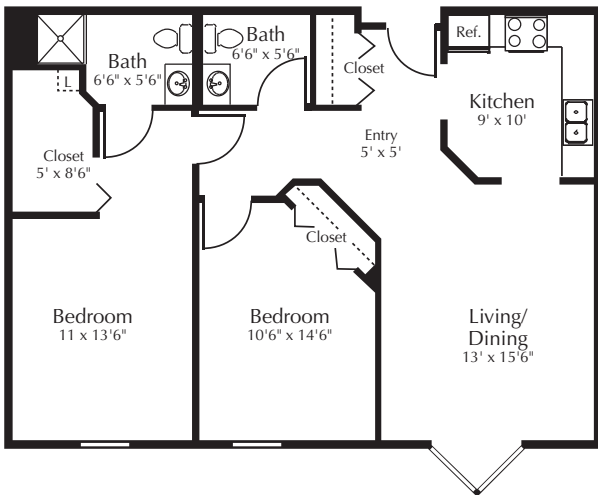
Studio  
392 sq. ft.



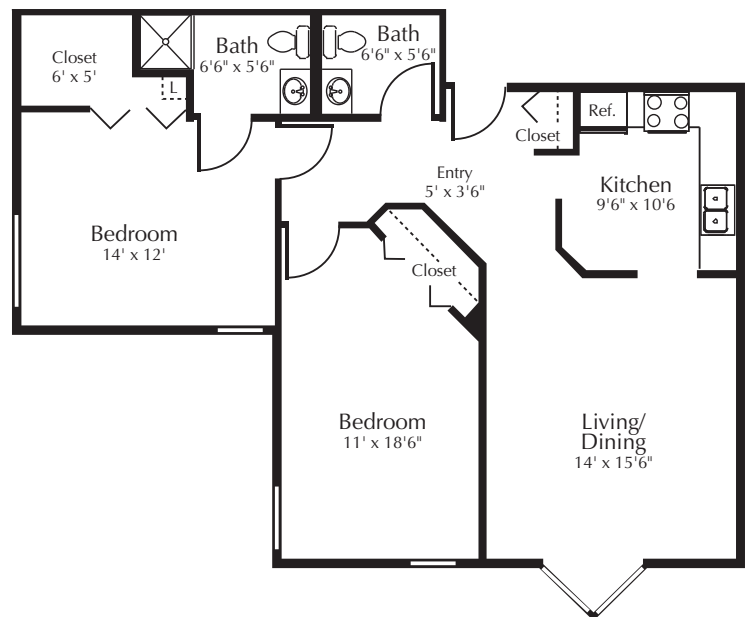
Large Studio  
476 sq. ft.



One-Bedroom  
613 sq. ft.



Two-Bedroom  
927 sq. ft.

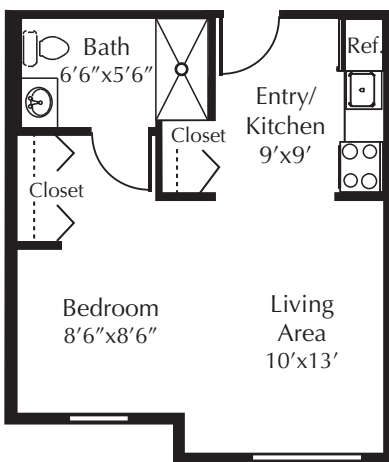


Large Two-Bedroom  
957 sq. ft.

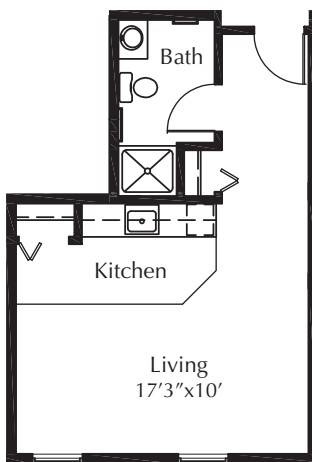
# The Woods

## Floor Plans

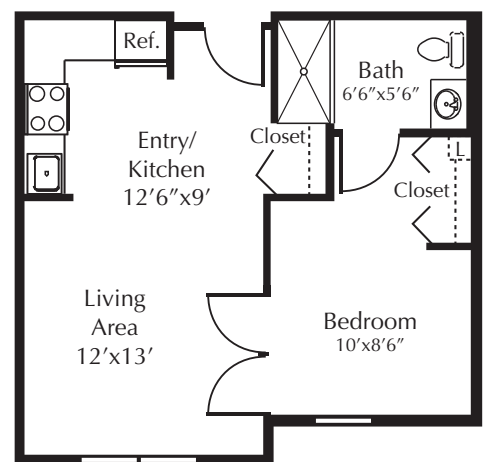
### Memory Care



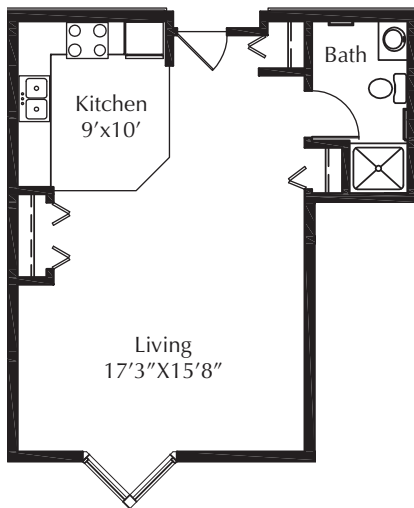
Aspen Studio  
392 sq. ft.



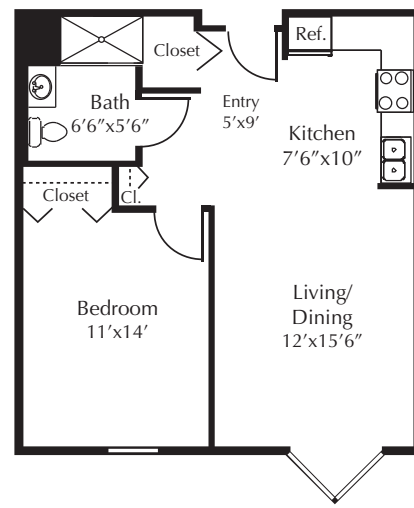
Birch Studio  
399 sq. ft.



Elm Studio  
476 sq. ft.



Maple Studio  
528 sq. ft.



Spruce One-Bedroom  
613 sq. ft.



